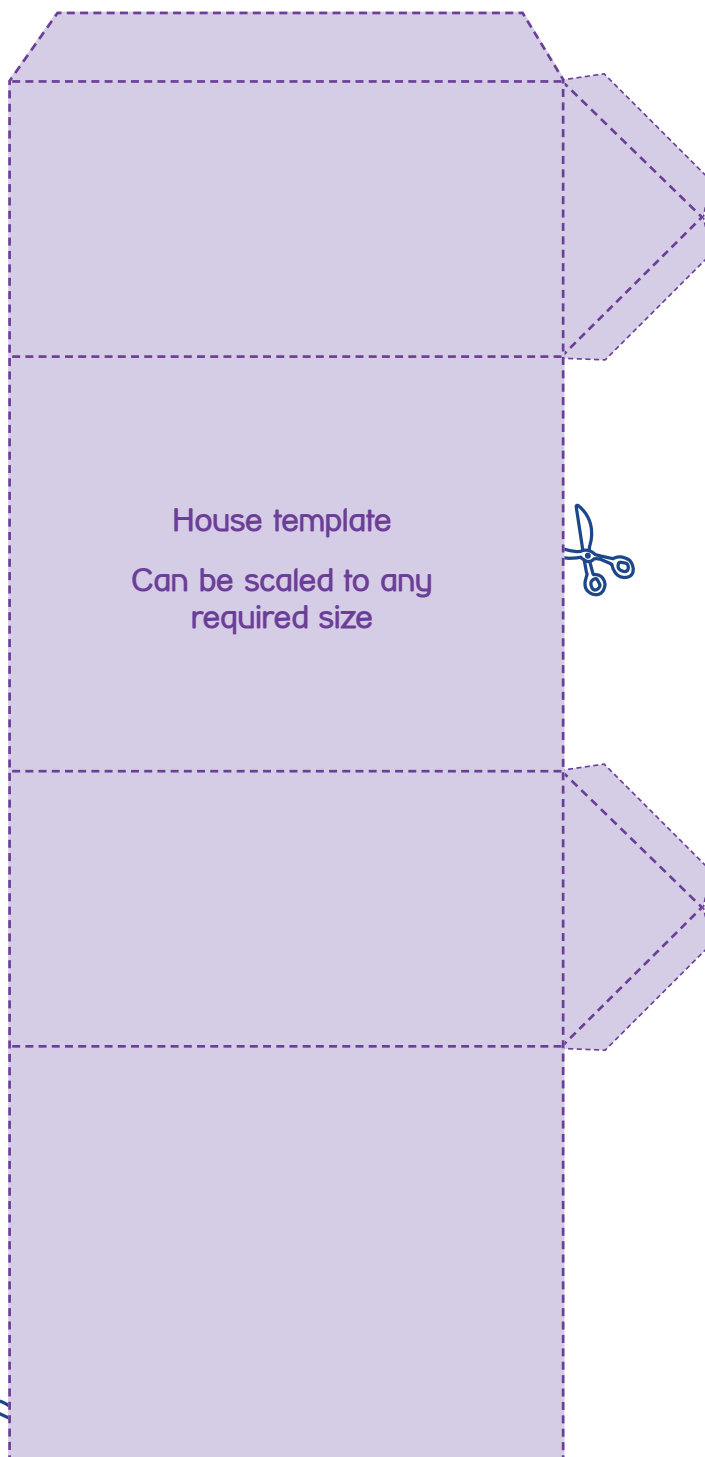


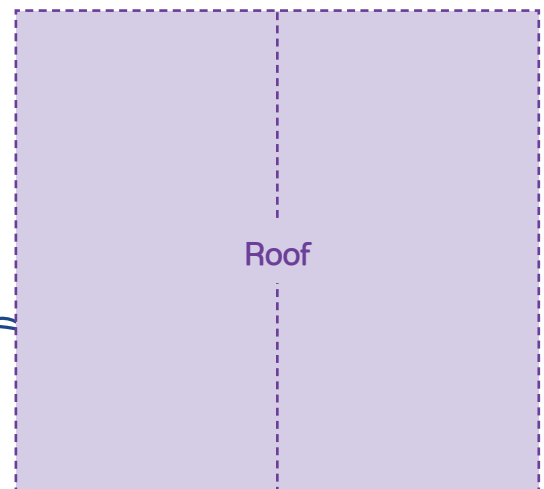
Home sweet home tree decoration

These sweet houses make eye catching tree decorations, and there's endless ways to personalise them to give this year's tree a homely touch.



Crafty shopping list

- 1 sheet each of A4 Kraft brown and gold card
- Needle and thread
- Scissors
- Ruler
- Pencil
- Black pen
- Glue
- Blu tack
- See our suggested suppliers list at mind.org.uk/crafternoon





How to make



1 Cut out house and roof shapes from these instructions.



2 Use a dot of Blu tack to hold the paper templates in place on your Kraft card and carefully cut around the outside of the larger house and smaller roof shapes.



3 Leaving the paper template on the card, carefully score lines along the fold lines with a ruler and scissors. Press firmly so the scoring goes through to the card below. Lift off the template and check that you can see the fold lines – you might need to go over them once more.

Take a photo of these instructions first so you can refer back to them, or find them online at mind.org.uk/crafternoon.



4 Now to design your house! Cut out small squares of gold card to be glowing windows and stick them on to the house.



5 Draw on the door to your house with a pen.



6 Use a needle and thread to add a loop of thread through the roof so you can hang it on your tree.



7 To assemble your house, use a line of glue on the house piece tabs and hold together firmly until it sticks. Then repeat with the roof tabs and press gently.



Crafty variations

Make a village of house lanterns! Carefully cut out the door and windows and instead of hanging the house on your tree pop it over a battery powered tea light to make a glowing lantern.

Thank you for taking part in Crafternoon. By fundraising at your Crafternoon you're helping us to make sure no one has to face a mental health problem alone.

If you have any feedback about your Crafternoon, we'd love to hear from you.
Email: crafternoon@mind.org.uk
Telephone: 0300 999 3887